

the campaign for ECS

Developing a fully-realized life is much like creating a work of art – it requires a proper perspective, a place in which to practice, and finally, a well-executed performance. Developing a life of the highest caliber requires many of those same ingredients.

As an institution committed to the continued growth and well-being of each student in our care, we recognize our vision must embrace opportunities to provide more for our students: more learning, more challenge, more growth, more community outreach, and more opportunity for students to achieve their full potential in Christ.

At ECS, that vision is realized in the Elsie M. Dunn Fine Arts Center. The addition of the Dunn Center will provide a concert hall for students to discover and develop their God-given talents. The Dunn Center will uniquely combine state-of-the-art performance technologies with the finest traditions of classic theater. Here our students will have the opportunity to perform center stage, experiencing the energy and excitement of bright lights and opening nights – memories that will last them a lifetime. In its dual capacity as chapel and theater, the Dunn Center

enhances both our school and community. The exceptional 1500-seat facility will provide a place for all our students, parents, and staff to come together for meetings, and most importantly, for chapel services. Carefully designed, the Center provides an environment conducive to the truest expressions of worship – those that come from the heart.

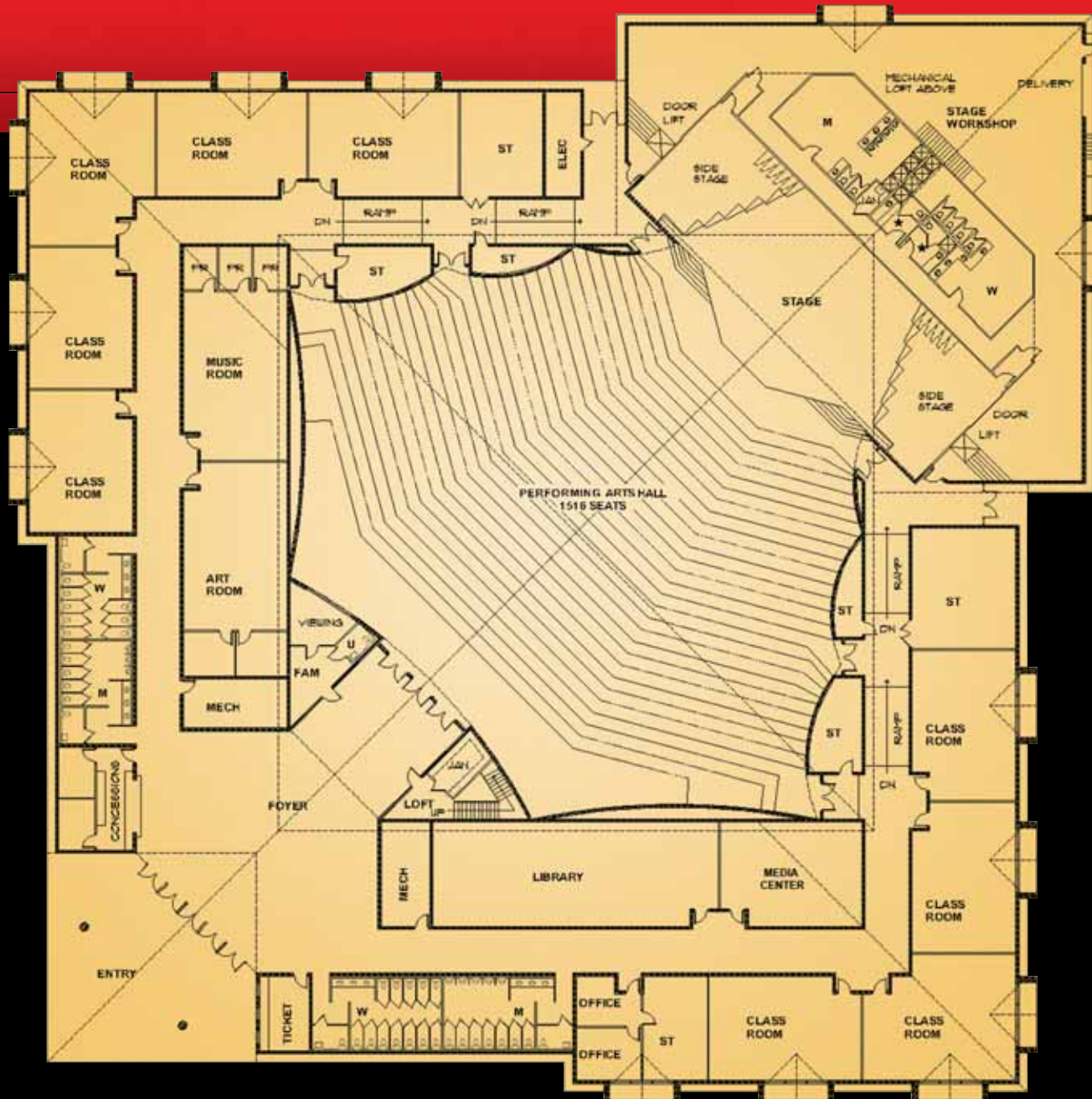


act one
lights. action. build!

the "stage"

The Dunn Center and capital campaign will provide the following:

- A 1,500 seat state-of-the-art concert hall for chapels, concerts, and performances
- A new 1750 sq. ft. library and media center for teaching, learning, and research
- An updated media lab to provide cutting-edge technology education
- Nine new classrooms to accommodate current and future needs across the curriculum
- A 1350 sq. ft. band and choral rehearsal room with three additional soundproof practice carrels for the high school music program
- Sufficient office and storage space to accommodate ECS's successful and growing fine arts program
- More than 480 parking spaces to relieve campus traffic and safety concerns



everyone plays a part

ECS students deserve a place to perform that is worthy of their desire, talent, and commitment – and a place to worship that will inspire and challenge them. Building this showcase facility requires each of us to play a special part in this command performance.

The budget for the Elsie M. Dunn Fine Arts Center totals \$16 million as defined in our strategic plan for growth. This significant investment is an essential commitment to our students' future and the quality of their education. By joining with us in this God-given opportunity, you will make a difference in the lives of our students – the future leaders of tomorrow.

To make this dream a reality, we need each member of our ECS family to partner with us in the following ways:

- Commit to pray daily for the success of this campaign
- Commit to provide your time and expertise when called upon
- Commit to give a sacrificial financial gift towards the ECS campaign's overall goal

Please call us at (239) 936-3319 and discover how you can partner with ECS in a capital campaign sure to win the applause of heaven.

act two

praise. play. perform.



LAND ACQUISITION (PURCHASE, RE-ZONING, LEGAL, ETC)	\$ 2,600,000
SITE PREPARATION (DEMOLITION, CLEARING, LANDSCAPING, ETC)	\$ 1,200,000
CONSTRUCTION COSTS, FURNITURE, AND FIXTURES	\$ 10,800,000
SOFT COSTS AND EXPENSES (ARCHITECTURAL, ENGINEERING, CONTINGENCY, FACILITY ENDOWMENT, CAMPAIGN EXPENSES)	\$ 1,400,000
TOTAL CAMPAIGN	\$16,000,000

performing for His glory!



Mrs. Elsie M. Dunn and her husband Douglas

Evangelical Christian School

In 1973, Evangelical Christian School was founded by Dr. Douglas and Elsie Dunn. To celebrate Mrs. Dunn's passion for Christian education, the new fine arts center will be named in her honor. Her investment, along with that of her husband, continues today as the faculty and staff invest resources in developing students' spiritual, intellectual, physical and emotional growth. It is a calling to which we have devoted ourselves and which rewards us every single day. With God's help, we design high-caliber programs that challenge our students to find and to follow the path God has planned for them. With God's blessing, these programs produce young men and women of faith, ready to perform on the stage of life.

www.goecs.org



Evangelical Christian School

8237 Beacon Blvd. | Fort Myers | FL 33907 | P. 239.936.3319 | F. 239.939.1445



everyone **plays** a part
the campaign for ecs

Evangelical Christian School